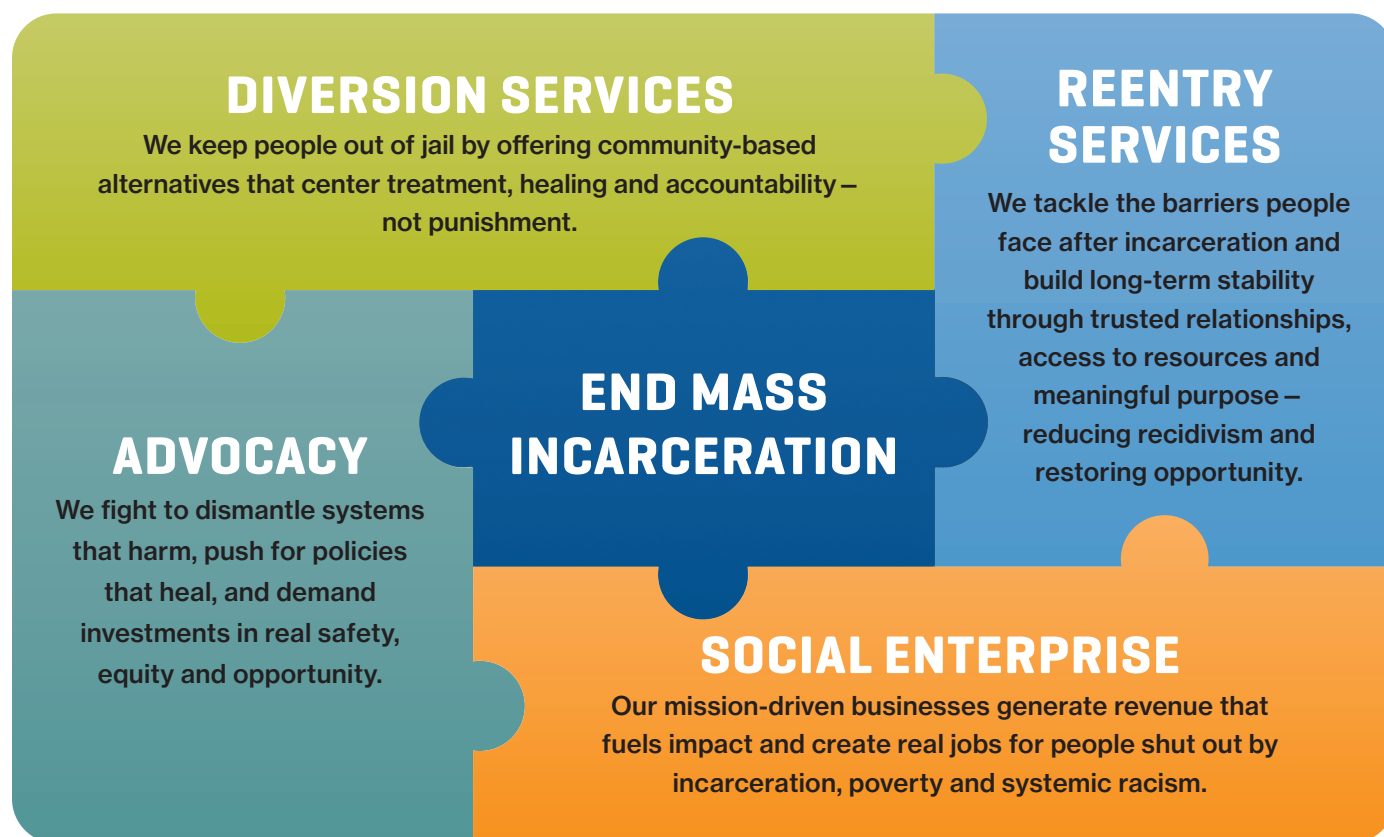


The Change We're Driving Toward

Far fewer people behind bars – especially from communities of color and low-income communities – and more people who've been justice-involved living with dignity, stability and purpose in the community.








How We Drive Change

Ending mass incarceration takes more than well-meaning programs. It takes a bold, unified strategy that fuses diversion, reentry, social enterprise and advocacy into one powerful engine for transformation. Our social enterprise model gives us the independence and agility to pursue deep, connected solutions – free from fragmented funding and outdated systems.



Impact That Matters

We measure success by the outcomes that move the needle – not just for individuals but for entire communities and systems.

-  Fewer people caught in the justice system
-  Greater job satisfaction and personal growth
-  Higher levels of well-being and self-sufficiency
-  Policies that address and reverse racial inequities
-  Reduced risk factors linked to incarceration
-  Scaled-up community-led approaches to public safety
-  Stronger pathways to lasting careers